

TOWN OF MUKWA ANNUAL MEETING SUMMARY

APRIL 21, 2015 PUBLIC INPUT DISCUSSION SUMMARY

The April 21, 2015 public input discussion quickly turned to the condition of the town's roads. There were 42 attendees that participated in several discussion techniques summarized below:

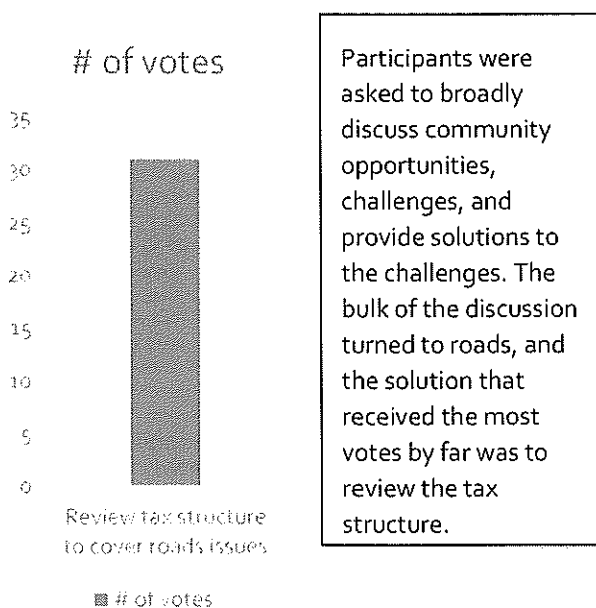
Best Case Scenario/Worst Case Scenario/Mostly Likely Scenario: Participants were asked to imagine what the best case/worst case/most likely solutions would be related to addressing the condition of the town's roads. The consensus was as follows:

Best Case:
All the roads are fixed and we can still afford our homes

Worst Case:
The tax never goes away and we have gravel roads

Most Likely:
Repair roads, plan for 1.5 mile replacement annually and consider traffic volumes

Community Opportunities/Challenges/Solutions:



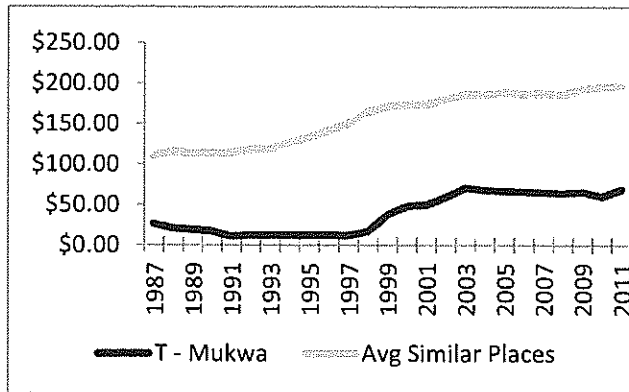
Participants were asked to broadly discuss community opportunities, challenges, and provide solutions to the challenges. The bulk of the discussion turned to roads, and the solution that received the most votes by far was to review the tax structure.

Final discussion (initiated by Town Board Chair and answered by anonymous ballot): "How much additional per year are you willing to pay on your tax bill?"

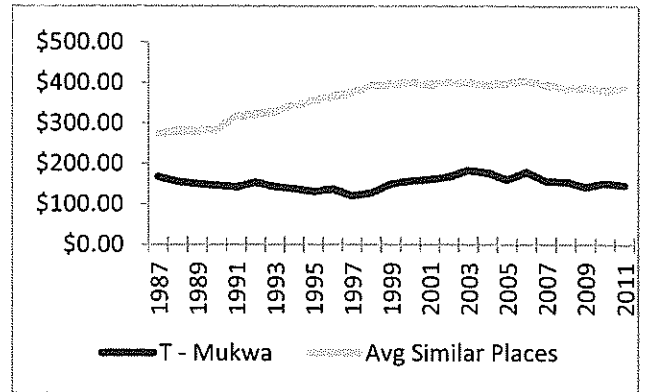
- i. < \$100 – 2 answers
- ii. \$100-\$200 – 8 answers
- iii. \$201-\$300 – 2 answers
- iv. > \$300 – 2 answers
- v. .50/\$1000 assessed – 1 answer
- vi. .60/\$1000 assessed – 1 answer
- vii. 5% - 2 answers
- viii. 2% - 1 answer

REVENUES

General Property Tax

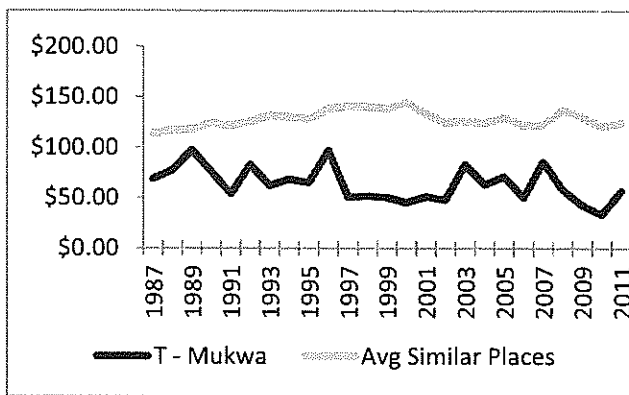


Total Revenues

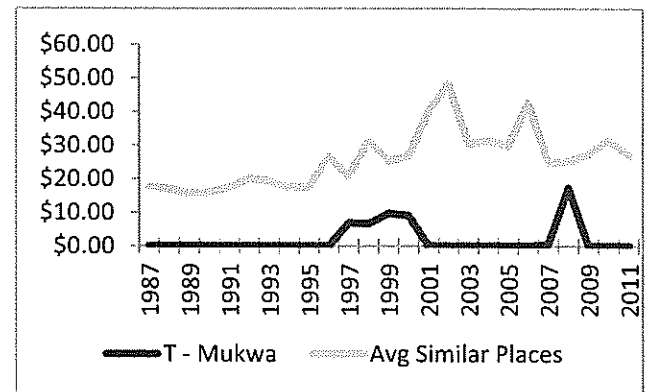


EXPENDITURES

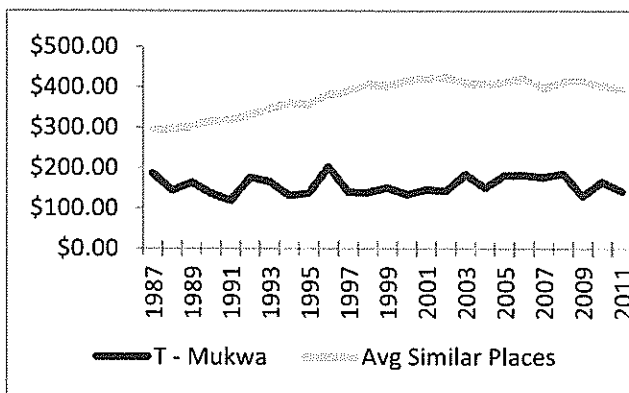
Highway Maintenance



Debt Service



Total Expenditures



Note: "Avg Similar Places" for Towns are calculated as follows (in 2010 population):

- Small – under 1,000
- Medium – 1,000-5,000
- Large – over 5,000

Revenues and Expenditures charts sourced from G.R.E.A.T. program, a joint effort of UW-Cooperative Extension Local Government Center, the Department of Agricultural and Applied Economics at UW-Madison, and the UW-Oshkosh Department of Public Administration



Waupaca County